



3. TRIAL PIT AND BOREHOLE LOGS, LACKENBY

Project Name
Baseline Site Investigation

Project No.
CO0520017E

Co-ords: 55464E - 22061N
Level: -

Date
23/04/2004

Location: Teesside

Dimensions: 3.00m

Scale
1:25

Client: Corus Plc

Depth
3.50m

1.00m

Logged By
KAB

Strata Depth (mbgl)	Level (m AOD)	Legend	Stratum Description	Sample Depth (mbgl)	Groundwater Strike (mbgl)
1.0			MADE GROUND. Compacted slag cobbles in a slag sand matrix		1.0
1.20					
1.40			MADE GROUND. Tarmac containing aggregate.		
			MADE GROUND. Slag cobbles and rubble (bricks and concrete)	1.50	
2.0					2.0
3.0				3.00	3.0
3.50			Trialpit Complete at 3.50 m		
4.0					4.0

Remarks: Hole terminated at 3.5m due to hard ground

Project Name
Baseline Site Report

Project No.
CO0520017C

Co-ords: 55512E - 21536N
Level: -

Date
22/04/2004

Location: Teesside

Dimensions: 3.00m

Scale
1:25

Client: Corus Plc

Depth
4.00m

1.00m

Logged By
GAD

Strata Depth (mbgl)	Level (m AOD)	Legend	Stratum Description	Sample Depth (mbgl)	Groundwater Strike (mbgl)
1.0			Orange brown grey angular coarse sandy gravel of brick and slag with many cobbles. Sand is medium(MADE GROUND)	0.50	
2.0	2.00		Brown black fairly stiff very slightly gravelly CLAY. Gravel is fine to medium	2.30	
3.0					
4.0	4.00		Trialpit Complete at 4.00 m		

Remarks: Very damp at 2.0m bgl above clay layer

Project Name
Baseline Site Investigation

Project No.
CO0520017E

Co-ords: 55545E - 21980N
Level: -

Date
23/04/2004

Location: Teesside

Dimensions: 3.00m

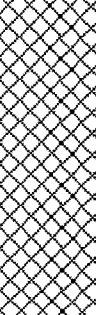

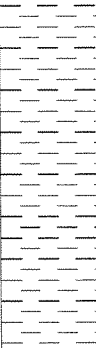
Scale
1:25

Client: Corus Plc

Depth
2.50m

1.00m

Logged By
KAB

Strata Depth (mbgl)	Level (m AOD)	Legend	Stratum Description	Sample Depth (mbgl)	Groundwater Strike (mbgl)
			MADE GROUND. Loose gravels and cobbles of slag in a brown sand. Small area discoloured (green and blue) at 0.2m	0.20	
1.10			Firm brown CLAY containing black organic matter	1.20	
1.30			Firm orange mottled CLAY with rounded to sub-rounded gravels and cobbles and lenses of fine yellow sand		
2.50			Trialpit Complete at 2.50 m		

Remarks: Groundwater strike - 1.1m

Project Name
Baseline Site Investigation

Project No.
CO0520017E

Co-ords: 55310E - 21955N
Level: -

Date
23/04/2004

Location: Teesside

Dimensions: 3.00m

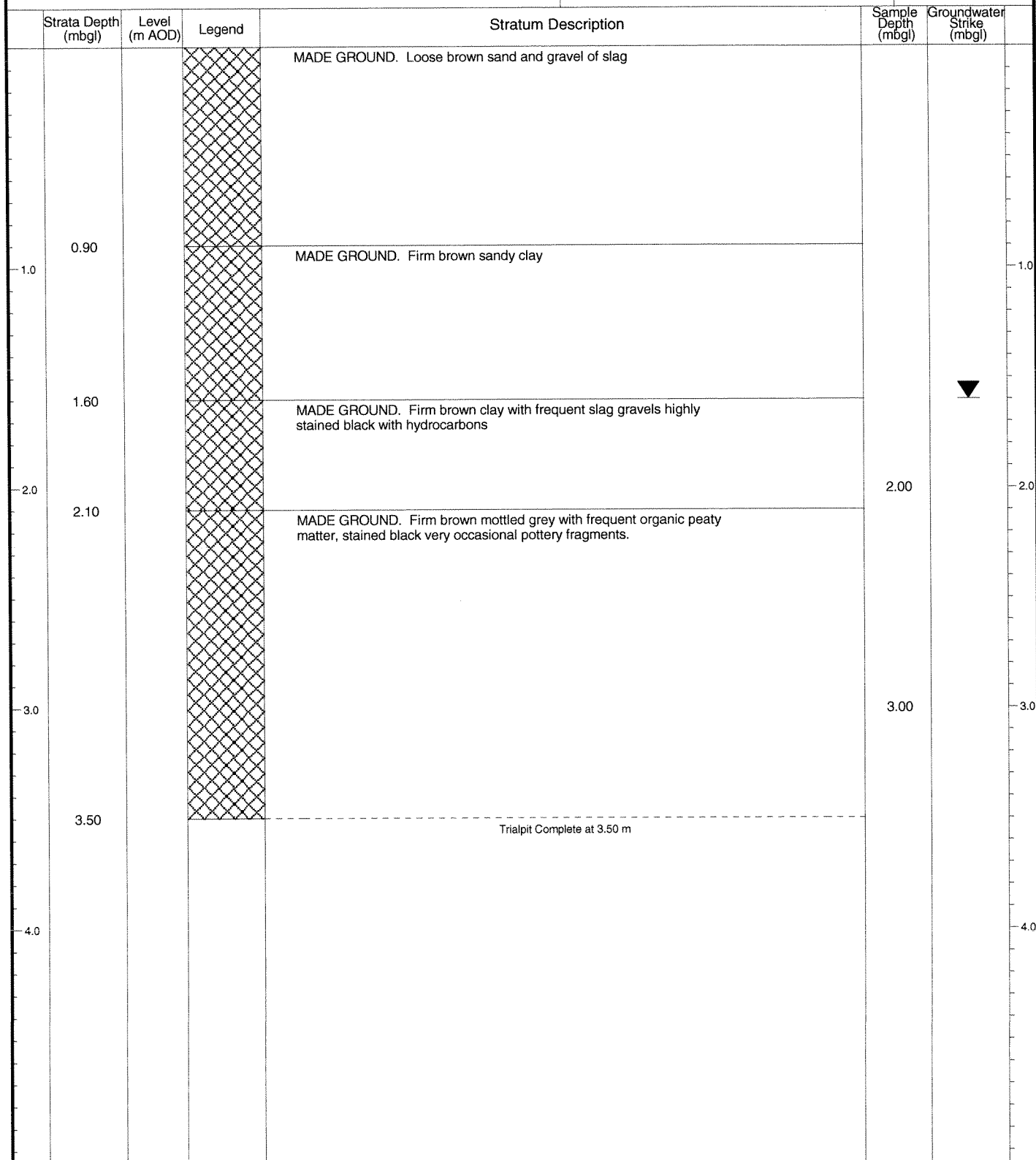
Scale
1:25

Client: Corus Plc

Depth
3.50m

1.00m

Logged By
KAB



Remarks: Groundwater strike - 1.6m

Project Name
Baseline Site Report

Project No.
CO0520017C

Co-ords: 55414E - 21349N
Level: -

Date
23/04/2004

Location: Teesside

Dimensions: 3.00m

Scale
1:25

Client: Corus Plc

Depth
4.00m

1.00m

Logged By
GAD

Strata Depth (mbgl)	Level (m AOD)	Legend	Stratum Description	Sample Depth (mbgl)	Groundwater Strike (mbgl)
0.30			Brown moist gravelly loose topsoil with many rootlets(MADE GROUND)	0.10	
			Grey brown white angular coarse gravel of slag and clinker with many cobbles(MADE GROUND)		
3.50			Light brown mottled grey very stiff very slightly gravelly CLAY. Gravel is fine to medium		
4.00			Trialpit Complete at 4.00 m	4.00	

Remarks:

Project Name
Baseline Site Report

Project No.
CO0520017C

Co-ords: 55182E - 21399N
Level: -

Date
23/04/2004

Location: Teesside

Dimensions: 3.00m


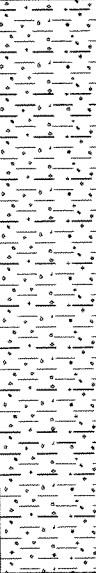
Scale
1:25

Client: Corus Plc

Depth
2.50m

1.00m

Logged By
GAD

Strata Depth (mbgl)	Level (m AOD)	Legend	Stratum Description	Sample Depth (mbgl)	Groundwater Strike (mbgl)
0.60			Black grey very sandy angular fine gravel of ash clinker and slag (MADE GROUND)	0.20	
1.0			Golden brown very silty weak slightly gravelly CLAY. Gravel is medium to coarse	1.50	
2.50			Trialpit Complete at 2.50 m		
3.0					
4.0					

Remarks: Water seeping in at 0.8m bgl above clay layer.

ENVIROS

Enviros Consulting Ltd
Sanderson House, Station Road
Horsforth, Leeds
LS18 5NT
Tel: 0113 239 5600



Trialpit No
7AT7
Sheet 1 of 1

Project Name
Baseline site investigation

Project No.
CO05200017

Co-ords: 55230E - 21400N
Level: -

Date
20/04/2004

Location: Teesside

Dimensions: 3.00m

Scale
1:25

Client: Corus Plc

Depth
3.00m

1.00m

Logged By
LaQ

Strata Depth (mbgl)	Level (m AOD)	Legend	Stratum Description	Sample Depth (mbgl)	Groundwater Strike (mbgl)
			MADE GROUND: Loose gravel to boulder sized fragments of slag in a loose black coal dust and slag matrix	0.20	
1.0					
2.0					
3.0	3.00			3.00	
4.0					

Trialpit Complete at 3.00 m

Remarks:



Enviros Consulting Ltd
Sanderson House, Station Road
Horsforth, Leeds
LS18 5NT
Tel: 0113 239 5600



Trialpit No
7AT8
Sheet 1 of 1

Project Name
Baseline Site Report

Project No.
CO0520017C

Co-ords: 55214E - 21640N
Level: -

Date
23/04/2004

Location: Teesside

Dimensions: 3.00m

Scale
1:25

Client: Corus Plc

Depth
4.00m

1.00m

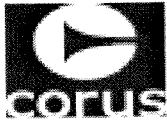
Logged By
GAD

Strata Depth (mbgl)	Level (m AOD)	Legend	Stratum Description	Sample Depth (mbgl)	Groundwater Strike (mbgl)
			Brown grey cream very sandy coarse angular gravel of slag (MADE GROUND)	0.20	
1.0	1.00		Black dry angular cobbles of slag (MADE GROUND)		1.0
	1.30		Brown grey mottled fairly stiff very slightly gravelly clay (MADE GROUND)	1.40	
2.0					2.0
3.0					3.0
4.0	4.00				4.0
Trialpit Complete at 4.00 m					

Remarks: Water seepage at 1.0m bgl. Oily odour apparent at 1.0m to 1.3m. Some loose black oily staining and odour at 1.3-1.4m.



Enviros Consulting Ltd
Sanderson House, Station Road
Horsforth, Leeds
LS18 5NT
Tel: 0113 239 5600



Trialpit No
7AT9
Sheet 1 of 1

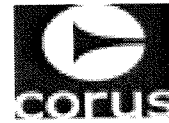
Project Name Baseline Site Report		Project No. CO0520017C		Co-ords: 55207E - 21535N Level: -		Date 23/04/2004	
Location: Teesside				Dimensions: 3.00m		Scale 1:25	
Client: Corus Plc				Depth 3.00m		Logged By GAD	

Strata Depth (mbgl)	Level (m AOD)	Legend	Stratum Description	Sample Depth (mbgl)	Groundwater Strike (mbgl)
0.20			Brown loose sandy medium angular gravel of slag ash and brick with timber and ferrous debris (MADE GROUND)	0.20	
			Golden brown medium to coarse SAND		
1.60			Brown grey mottled fairly stiff very slightly gravelly CLAY. Gravel is fine to medium	1.60	
3.00			Trialpit Complete at 3.00 m		

Remarks: Black oily staining and oily black odour from 1.0m to 1.8m.



Enviros Consulting Ltd
Sanderson House, Station Road
Horsforth, Leeds
LS18 5NT
Tel: 0113 239 5600



Trialpit No
7AT10
Sheet 1 of 1

Project Name
Baseline site investigation

Project No.
CO05200017

Co-ords: 55310E - 21260N
Level: -

Date
20/04/2004

Location: Teesside

Dimensions: 3.00m

Scale
1:25

Client: Corus Plc

Depth
4.20m

1.00m

Logged By
LaQ

Strata Depth (mbgl)	Level (m AOD)	Legend	Stratum Description	Sample Depth (mbgl)	Groundwater Strike (mbgl)
0.35			MADE GROUND: Loose gravel to boulder sized fragments of slag in a loose grey slag matrix	0.30	
			MADE GROUND: loose gravel to cobble sized fragments of slag in a loose greyish brown slag matrix		
2.10			MADE GROUND: Loose gravel to cobble sized fragments of slag and brick fragments in a loose brown slag matrix		
2.45			MADE GROUND: Orange brown mottled sandy silt with occasional gravel, and rare horizon/lense of vegetal material in a black silty matrix		
3.75			SAND and SILT: Thinly laminated brown silt interbedded with fine laminations of orange fine-grained micaceous sand	4.00	
4.20			Trialpit Complete at 4.20 m		

Remarks:

Project Name
Baseline site investigation

Project No.
CO05200017

Co-ords: 55123E - 21249N
Level: -

Date
20/04/2004

Location: Teesside

Dimensions: 3.00m

Scale
1:25

Client: Corus Plc

Depth
4.00m

1.00m

Logged By
LaQ

Strata Depth (mbgl)	Level (m AOD)	Legend	Stratum Description	Sample Depth (mbgl)	Groundwater Strike (mbgl)
0.15			MADE GROUND: Loose gravel in a brown sandy matrix	0.20	
			MADE GROUND: Loose gravel to cobble sized fragments of slag in a loose greyish brown slag matrix		
1.00			MADE GROUND: Black silt with abundant vegetal material.		
1.20			MADE GROUND: Orange brown sandy silt with occasional slag gravel with occasional patch of stiff red clay		
3.50			SAND and SILT: Thinly laminated brown silt interbedded with fine laminations of orange fine-grained micaceous sand	3.90	
4.00			Trialpit Complete at 4.00 m		

Remarks:

Project Name
Baseline site investigation

Project No.
CO05200017

Co-ords: 55465E - 21489N
Level: -

Date
20/04/2004

Location: Teesside

Dimensions: 3.00m
Depth 4.25m 1.00m

Scale
1:25

Logged By
LaQ

Client: Corus Plc

Strata Depth (mbgl)	Level (m AOD)	Legend	Stratum Description	Sample Depth (mbgl)	Groundwater Strike (mbgl)
0.20			MADE GROUND: Loose gravel in a brown sandy matrix	0.20	
0.60			MADE GROUND: Loose gravel to cobble sized fragments of slag in a loose brown slag matrix.		
1.75			MADE GROUND: Loose gravel to boulder sized welded fragments of slag in a loose brown slag matrix. Occasional pieces of plastics and metal.		
3.25			MADE GROUND: Soft to firm brown clay with gravel to cobble sized fragments of slag, and brick fragments. Occasional horizons/lenses of wet black silt with abundant vegetal material.		
4.25			SILTY CLAY: Soft to firm orange brown silty clay with gravel and rootlets, with occasional horizons/ lenses of wet black silt with abundant vegetal material. Reworked.	4.00	
Trialpit Complete at 4.25 m					

Remarks:

Project Name
Baseline Site Report

Project No.
CO0520017C

Co-ords: 55980E - 21250N
Level: -

Date
23/04/2004

Location: Teesside

Dimensions: 3.00m

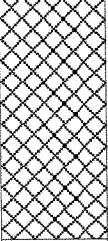

Scale
1:25

Client: Corus Plc

Depth
1.00m

1.00m

Logged By
GAD

Strata Depth (mbgl)	Level (m AOD)	Legend	Stratum Description	Sample Depth (mbgl)	Groundwater Strike (mbgl)
			Brown grey cream angular medium to coarse gravel of slag and ash (MADE GROUND)		
0.80			Brown red very stiff laminated CLAY		
1.00			Trialpit Complete at 1.00 m	1.00	
				2.40	

Remarks:

Project Name
Baseline Site Report

Project No.
CO0520017C

Co-ords: 55740E - 21255N
Level: -

Date
23/04/2004

Location: Teesside

Dimensions: 3.00m

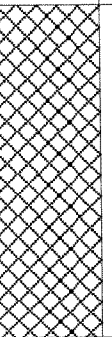
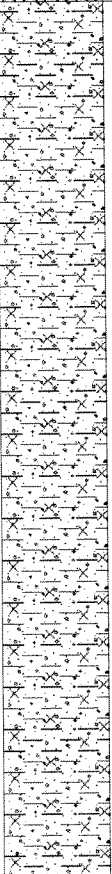
Scale
1:25

Depth
4.00m

1.00m

Logged By
GAD

Client: Corus Plc

Strata Depth (mbgl)	Level (m AOD)	Legend	Stratum Description	Sample Depth (mbgl)	Groundwater Strike (mbgl)
			Brown grey medium angular very slightly sandy gravel of slag and clinker(MADE GROUND)	0.30	
1.0	1.10		Dark brown stiff very slightly gravelly slightly sandy CLAY	1.20	
2.0					
3.0					
4.0	4.00				
Trialpit Complete at 4.00 m					

Remarks: Black oil staining and oily odour of same??? At 1.1 to 1.3m bgl

Project Name
Baseline Site Report

Project No.
CO0520017C

Co-ords: 55545E - 21250N
Level: -

Date
23/04/2004

Location: Teesside

Dimensions: 3.00m

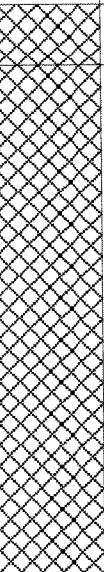
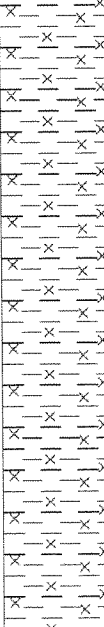
Scale
1:25

Client: Corus Plc

Depth
4.00m

1.00m

Logged By
GAD

Strata Depth (mbgl)	Level (m AOD)	Legend	Stratum Description	Sample Depth (mbgl)	Groundwater Strike (mbgl)
0.20			Dark brown black yellow loose topsoil with fine rootlets(MADE GROUND)	0.20	
			White grey very sandy angular fine to medium gravel of slag and clinker with rare cobbles(MADE GROUND)		
1.90			Light brown yellow mottled grey weak very silty CLAY		
4.00			Trialpit Complete at 4.00 m	4.00	

Remarks: Oily black staining and oily odour from 1.9 to 2.0m bgl/Water seeping in above clay layer between 1.8 to 1.9m bgl

Project Name
Baseline Site Report

Project No.
CO0520017C

Co-ords: 55620E - 21385N
Level: -

Date
28/04/2004

Location: Teesside

Dimensions: 3.00m

Scale
1:25

Client: Corus Plc

Depth
4.00m

1.00m

Logged By
GAD

Strata Depth (mbgl)	Level (m AOD)	Legend	Stratum Description	Sample Depth (mbgl)	Groundwater Strike (mbgl)
			Brown grey angular sandy coarse gravel of brick and slag (MADE GROUND)	0.20	
1.0					1.0
1.80					
2.0			White grey fine to medium loose angular gravel of slag and ash with many cobbles and boulders (MADE GROUND)		2.0
3.0					3.0
4.0	4.00			3.80	4.0
			Trialpit Complete at 4.00 m		

Remarks:

Project Name
Baseline Site Report

Project No.
CO0520017C

Co-ords: 55800E - 21300N
Level: -

Date
23/04/2004

Location: Teesside

Dimensions: 3.00m

Scale
1:25

Client: Corus Plc

Depth
3.00m

1.00m

Logged By
GAD

Strata Depth (mbgl)	Level (m AOD)	Legend	Stratum Description	Sample Depth (mbgl)	Groundwater Strike (mbgl)
0.10			Dark brown moist loose topsoil with many rootlets(MADE GROUND)	0.20	
0.50			Brown grey white sandy medium to coarse angular gravel of slag with many cobbles (MADE GROUND)		
1.30			Grey white brown angular cobbles and boulders of slag (MADE GROUND)		
3.00			Brown black stiff very slightly gravelly very silty CLAY. Gravel is fine to medium		
Trialpit Complete at 3.00 m					

Remarks:

Project Name
Baseline Site Report

Project No.
CO0520017C

Co-ords: 55665E - 21480N
Level: -

Date
26/04/2004

Location: Teesside

Dimensions: 3.00m

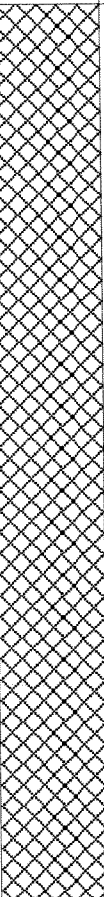
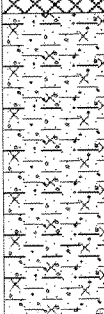
Scale
1:25

Client: Corus Plc

Depth
4.00m

1.00m

Logged By
GAD

Strata Depth (mbgl)	Level (m AOD)	Legend	Stratum Description	Sample Depth (mbgl)	Groundwater Strike (mbgl)
			Orange brown cream very sandy angular medium to coarse gravel of slag and brick with some cobbles and boulders (MADE GROUND)	0.30	
3.00			Light brown gravelly slightly sandy CLAY. Gravel is fine to medium	3.20	
4.00			Trialpit Complete at 4.00 m		

Remarks:

ENVIROS

Enviros Consulting Ltd
 Sanderson House, Station Road
 Horsforth, Leeds
 LS18 5NT
 Tel: 0113 239 5600



Trialpit No
8AT6
 Sheet 1 of 1

Project Name
 Baseline Site Report

Project No.
 CO0520017C

Co-ords: 55938E - 21491N
 Level: -

Date
 23/04/2004

Location: Teesside

Dimensions: 3.00m

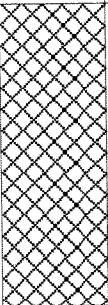
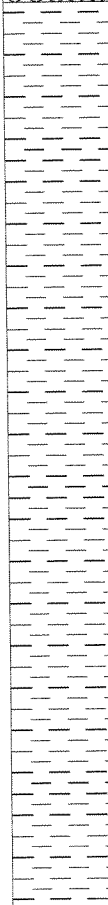
Scale
 1:25

Client: Corus Plc

Depth
 4.00m

1.00m

Logged By
 GAD

	Strata Depth (mbgl)	Level (m AOD)	Legend	Stratum Description	Sample Depth (mbgl)	Groundwater Strike (mbgl)
				Brown grey white black medium angular sandy gravel of slag and clinker with many cobbles. (MADE GROUND)	0.30	
1.0	1.00			Brown very stiff very slightly gravelly laminated CLAY	1.50	
2.0						
3.0						
4.0	4.00			Trialpit Complete at 4.00 m		

Remarks: Water filling hole at 1.0m bgl

Project Name
Baseline Site Investigation

Project No.
CO0520017E

Co-ords: 56346E - 22225N
Level: -

Date
26/04/2004

Location: Teesside

Dimensions: 3.00m

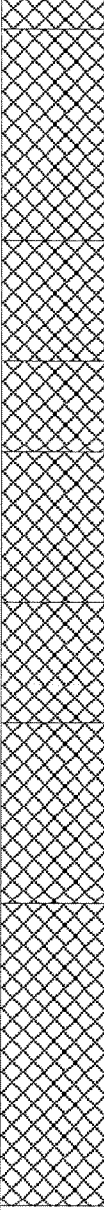
Scale
1:25

Client: Corus Plc

Depth
4.00m

1.00m

Logged By
KAB

Strata Depth (mbgl)	Level (m AOD)	Legend	Stratum Description	Sample Depth (mbgl)	Groundwater Strike (mbgl)
0.10			TOPSOIL. Loose brown sandy gravelly topsoil		
			MADE GROUND. Slag cobbles in a brown sandy clay		
0.80					
			MADE GROUND. Cobbles of coal and slag in a brown sandy clay		
1.20			MADE GROUND. Brown sandy clay		
1.50			MADE GROUND. Slag and rubble in a white ashy matrix	1.60	
2.00			MADE GROUND. Brown sandy clay		
2.40			MADE GROUND. Slag and rubble in a white ashy matrix		
3.00			MADE GROUND. Reworked red brown mottled grey CLAY with frequent subangular to rounded cobbles of slate and mudstone		
4.00			Trialpit Complete at 4.00 m	3.80	

Remarks: Groundwater strike - 1.2m

Project Name
Baseline Site Investigation

Project No.
CO0520017E

Co-ords: 56721E - 22308N
Level: -

Date
27/04/2004

Location: Teesside

Dimensions: 3.00m

Scale
1:25

Client: Corus Plc

Depth
4.00m

1.00m

Logged By
KAB

Strata Depth (mbgl)	Level (m AOD)	Legend	Stratum Description	Sample Depth (mbgl)	Groundwater Strike (mbgl)
			MADE GROUND. Slag cobbles and gravels in a sandy matrix		
2.20			MADE GROUND. Reworked red brown clay, stained black with hydrocarbons	2.30	
2.50			MADE GROUND. Reworked firm red brown mottled clay with yellow sand lenses and red and grey mudstone cobbles		
3.80				3.80	
4.00			Trialpit Complete at 4.00 m		

Remarks:

Project Name
Baseline Site Investigation

Project No.
CO0520017E

Co-ords: 56346E - 22225N
Level: -

Date
27/04/2004

Location: Teesside

Dimensions: 3.00m

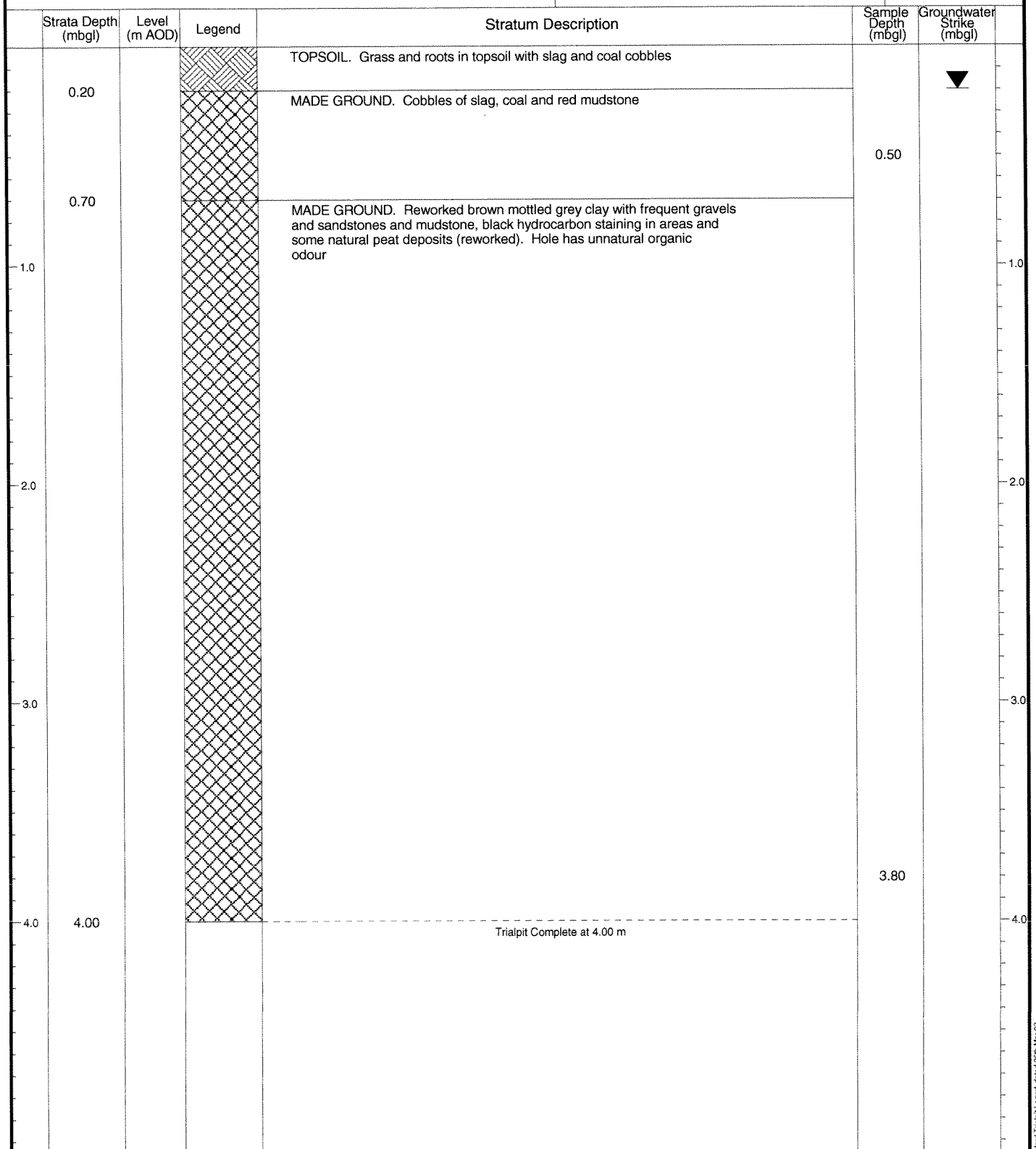
Scale
1:25

Client: Corus Plc

Depth
4.00m

1.00m

Logged By
KAB



Remarks: Groundwater strike - 0.2m
Many water strikes very wet

Project Name
Baseline Site Investigation

Project No.
CO0520017E

Co-ords: -
Level: -

Date
26/04/2004

Location: Teesside

Dimensions: 3.00m

Depth
4.30m

1.00m

Scale
1:25

Client: Corus Plc

Logged By
KAB

Strata Depth (mbgl)	Level (m AOD)	Legend	Stratum Description	Sample Depth (mbgl)	Groundwater Strike (mbgl)
0.10			MADE GROUND. Slag cobbles		
1.20			MADE GROUND. Rubble and slag including bricks, furnace bricks in a sandy clay, with many large metal railway sleepers		
			MADE GROUND. Reworked clay		
3.80			Firm brown mottled grey CLAY with bands of fine yellow and orange sand and occasional cobbles and gravels and angular friable grey mudstone		
4.30			Trialpit Complete at 4.30 m		

Remarks:

Borehole Log



Soil Mechanics

Drilled GB Logged RW Checked JT		Start 26/04/2004 End 26/04/2004		Equipment, Methods and Remarks Dando 2000		Depth from 0.00m to 6.00m Diameter 150mm Casing Depth 3.00m		Ground Level +9.93 mOD Coordinates E 55520.57 National Grid N 21698.94 Chainage	
Samples and Tests					Strata				
Depth	Type & No	Records	Date Casing	Time Water	Description	Depth, Level/ (Thickness)	Legend	Backfill/ Instruments	
0.50-0.90	B 1				MADE GROUND: Dark grey brown silty very sandy angular to subrounded GRAVEL size fragments of slag.	(1.00)			
1.20-1.60	B 2				Firm, becoming soft, multicoloured locally slightly sandy slightly gravelly CLAY. Gravel is angular to subrounded fine and medium siltstone, mudstone, sandstone and coal. From 1.70-1.90m, very soft, gravelly.	1.00 +8.93			
1.70-2.10	B 3					(4.50)			
5.50-6.00	B 4		26/04/2004 3.00	dry	Very soft red brown mottled brown and grey brown CLAY. With many partings of silt.	5.50 +4.43 (0.50)			
					EXPLORATORY HOLE ENDS AT 6.00 m	6.00 +3.93			SP
Depth	Type & No	Records	Date Casing	Time Water					
Groundwater Entries No. Struck Post strike behaviour 1 1.70 -					Depth sealed (m) -		Depth Related Remarks * From to (m)		
Notes: For explanation of symbols and abbreviations see key sheet. All depths and reduced levels in metres. Stratum thickness given in brackets in depth column.					Project CORUS TEESSIDE Project No. B4009 Carried out for Enviros Consulting Limited		Borehole 7AB1 Sheet 1 of 1		

Scale 1:50

(c) MESG 298 v1.1507/06/2004 09:59:13



Borehole Log



Soil Mechanics

Drilled GB Logged RW Checked JT		Start 26/04/2004 End 26/04/2004	Equipment, Methods and Remarks Dando 2000		Depth from 0.00m to 10.00m Diameter 150mm Casing Depth 3.00m	Ground Level +9.78 mOD Coordinates E 55399.46 National Grid N 21332.82 Chainage		
Samples and Tests				Strata				
Depth	Type & No	Records	Date Casing	Time Water	Description	Depth, Level/ (Thickness)	Legend	Backfill/ Instruments
1.00-1.40	B 1				MADE GROUND: Grey brown clayey sandy angular to subangular fine to coarse GRAVEL size fragments of slag and metal. With some angular to subangular cobbles of slag.	(1.90)		
2.00-2.40	B 2				MADE GROUND: Firm, locally soft, grey brown mottled dark grey locally slightly sandy slightly gravelly organic CLAY. Gravel is angular to subangular fine to coarse fragments of siltstone, slag, coal, brick and glass. With occasional rootlets.	1.90 +7.88 (1.20)		
3.20-3.60	B 3				MADE GROUND: Firm, locally soft, multicoloured slightly gravelly locally slightly organic CLAY. Gravel is angular to subangular fine and medium fragments of slag.	3.10 +6.68 (1.00)		
4.10-4.40	B 4				Firm interlaminated brown and grey CLAY and SILT.	4.10 +5.68 (2.90)		
8.00-8.40	B 5				Firm red brown locally slightly sandy slightly gravelly CLAY. Gravel is angular to subrounded fine and medium siltstone, mudstone and sandstone.	7.00 +2.78 (3.00)		
			26/04/2004 3.00	dry				
EXPLORATORY HOLE ENDS AT 10.00 m								
Groundwater Entries No. Struck Post strike behaviour 1 5.00 -					Depth sealed (m) -		Depth Related Remarks * From to (m)	
Chiselling Depths (m) Time Tools used 0.00-0.00 0 mins								
Notes: For explanation of symbols and abbreviations see key sheet. All depths and reduced levels in metres. Stratum thickness given in brackets in depth column.					Project CORUS TEESSIDE Project No. B4009 Carried out for Enviro Consulting Limited		Borehole 7AB2 Sheet 1 of 1	
Scale 1:50 (c) MESO 298 v1.1507/06/2004 09:50:41								

Borehole Log



Soil Mechanics

Drilled TQ Logged RW Checked JT		Start 26/04/2004 End 26/04/2004		Equipment, Methods and Remarks Dando 175		Depth from 0.00m to 6.70m Diameter 150mm Casing Depth 6.10m		Ground Level Coordinates National Grid Chainage		+10.08 mOD E 55254.18 N 21399.80									
Samples and Tests						Strata													
Depth		Type & No		Records		Date Casing		Time Water		Description		Depth, Level/ (Thickness)		Legend		Backfill/ Instruments			
2.30-2.80		B 1								MADE GROUND: Grey brown slightly clayey very sandy angular to subangular fine to coarse GRAVEL size fragments of slag and brick. With occasional angular to subangular cobbles of slag and brick. From 0.00-1.00m, dark grey, slightly silty. Below 4.40m, dark grey, not clayey.		(5.20)							
4.40-4.80		B 2																	
5.20-5.70		B 3								Soft, locally firm, red brown slightly gravelly CLAY. Gravel is angular to subangular fine and medium mudstone, siltstone, sandstone and coal.		5.20 +4.88							
						26/04/2004 6.10		dry											
										EXPLORATORY HOLE ENDS AT 6.70 m		6.70 +3.38				SP			
Depth		Type & No		Records		Date Casing		Time Water											
Groundwater Entries										Depth Related Remarks *				Chiselling					
No.		Struck (m)		Post strike behaviour		Depth sealed (m)				From		to (m)		Depths (m)		Time		Tools used	
1		2.30		-										4.10 -4.55		60 mins			
Notes: For explanation of symbols and abbreviations see key sheet. All depths and reduced levels in metres. Stratum thickness given in brackets in depth column.										Project CORUS TEESSIDE Project No. B4009 Carried out for Enviros Consulting Limited				Borehole 7AB3 Sheet 1 of 1					
Scale 1:50										(c) MESG 298 v1.1507/06/2004 09:52:43									

Borehole Log



Soil Mechanics

Drilled TQ Logged RW Checked JT		Start 26/04/2004 End 26/04/2004		Equipment, Methods and Remarks Dando 175		Depth from 0.00m to 6.20m Diameter 150mm Casing Depth 4.60m		Ground Level Coordinates +10.07 mOD National Grid E 55201.21 Chainage N 21251.95	
Samples and Tests					Strata				
Depth	Type & No	Records	Date Casing	Time Water	Description	Depth, Level (Thickness)	Legend	Backfill/ Instruments	
					MADE GROUND: Clayey slag. (Driller's description).	(1.00)			
1.60-2.20	B 1				MADE GROUND: Very soft multicoloured slightly gravelly CLAY. Gravel is angular to subangular fine to coarse fragments of slag, limestone and siltstone. With occasional angular to subangular cobbles of similar lithology.	1.00 +9.07 (1.60)			
2.60-3.60	B 2				Very soft grey brown mottled yellow brown CLAY. With many partings and pockets (<20mm thick/diameter) of silt.	2.60 +7.47 (2.60)			
5.20-6.20	B 3				Very soft, locally soft, red brown mottled brown and green grey locally slightly sandy slightly gravelly CLAY. Gravel is angular to subangular fine and medium mudstone, siltstone, sandstone and coal.	5.20 +4.87 (1.00)			
			26/04/2004 4.60	dry	EXPLORATORY HOLE ENDS AT 6.20 m	6.20 +3.87			SP
Depth	Type & No	Records	Date Casing	Time Water					
Groundwater Entries					Depth Related Remarks *		Chiselling		
No.	Struck (m)	Post strike behaviour	Depth sealed (m)		From to (m)		Depths (m)	Time	Tools used
1	2.20	-							
Notes: For explanation of symbols and abbreviations see key sheet. All depths and reduced levels in metres. Stratum thickness given in brackets in depth column.					Project CORUS TEESIDE Project No. B4009 Carried out for Enviros Consulting Limited		Borehole 7AB4 Sheet 1 of 1		
Scale 1:50									

Borehole Log



Soil Mechanics

Drilled TQ Logged RW Checked JT		Start 28/04/2004 End 28/04/2004		Equipment, Methods and Remarks Dando 175		Depth from 0.00m to 7.00m Diameter 150mm Casing Depth 3.00m		Ground Level Coordinates National Grid Chainage		+9.92 mOD E 55546.61 N 21987.26		
Samples and Tests					Strata							
Depth	Type & No	Records	Date Casing	Time Water	Description	Depth, Level (Thickness)	Legend	Backfill/ Instruments				
0.55-1.30	B 1				MADE GROUND: Very soft brown mottled dark grey gravelly CLAY. Gravel is angular to subangular fine to coarse fragments of slag. With occasional angular to subangular cobbles of slag.	(1.80)						
1.80-2.10	B 2				Firm multicoloured slightly gravelly CLAY. Gravel is angular to subrounded fine and medium siltstone, mudstone, sandstone, coal and dolerite.	1.80 +8.12						
2.20-2.60	B 3					(3.50)						
5.40-5.80	B 4				Soft brown locally stained dark grey gravelly CLAY. Gravel is angular to subrounded fine to coarse siltstone, sandstone, mudstone, limestone and quartz.	5.30 +4.62						
6.40-6.90	B 5				Stiff, locally very stiff, grey gravelly CLAY. Gravel is angular to subangular fine to coarse mudstone and siltstone. With occasional angular to subangular cobbles of mudstone and siltstone.	6.40 +3.52						
6.90-7.00	B 6		28/04/2004 3.00	dry		7.00 +2.92						
					EXPLORATORY HOLE ENDS AT 7.00 m			SP				
Depth	Type & No	Records	Date Casing	Time Water	Groundwater Entries		Depth Related Remarks *		Chiselling			
					No.	Struck (m)	Post strike behaviour	From	to (m)	Depths (m)	Time	Tools used
					1	0.55	-			6.90 -7.00	15 mins	
Notes: For explanation of symbols and abbreviations see key sheet. All depths and reduced levels in metres. Stratum thickness given in brackets in depth column.					Project CORUS TEESIDE Project No. B4009 Carried out for Enviros Consulting Limited					Borehole 7AB5 Sheet 1 of 1		
Scale 1:50 (c) MEG 288 v1.1507/06/2004 09:57:00					AGS							

Borehole Log



Soil Mechanics

Drilled TQ Logged RW Checked JT		Start 27/04/2004 End 27/04/2004		Equipment, Methods and Remarks Dando 175		Depth from 0.00m to 9.30m Diameter 150mm Casing Depth 6.00m		Ground Level +10.15 mOD Coordinates E 55542.06 National Grid N 21261.05 Chainage	
Samples and Tests					Strata				
Depth	Type & No	Records	Date Casing	Time Water	Description	Depth, Level (Thickness)	Legend	Backfill/ Instruments	
1.00-2.00	B 1				MADE GROUND: Grey slightly silty sandy angular to subrounded fine to coarse GRAVEL size fragments of slag. With some angular to subrounded cobbles of slag.	(2.20)			
2.20-2.50	B 2				Firm brown, locally mottled grey, slightly gravelly CLAY. Gravel is angular to subangular fine and medium limestone and coal. With many partings of silt.	2.20 +7.95			
3.00-3.80	B 3				From 2.20-3.00m, brown and orange brown mottled grey.	(3.10)			
5.30-6.00	B 4				Firm, locally soft, red brown slightly sandy slightly gravelly CLAY. Gravel is angular to subrounded fine and medium siltstone, mudstone, sandstone and limestone.	5.30 +4.85			
9.00-9.30	B 5		27/04/2004 6.00	dry	Very soft red brown and grey gravelly CLAY. Gravel is angular to subangular fine to coarse mudstone.	9.00 +1.15 (0.30) 9.30 +0.85			
					EXPLORATORY HOLE ENDS AT 9.30 m			SP	
Depth	Type & No	Records	Date Casing	Time Water					
Groundwater Entries No. Struck Post strike behaviour (m) None observed (see Key Sheet)					Depth Related Remarks * From to (m)		Chiselling Depths (m) Time Tools used		
Notes: For explanation of symbols and abbreviations see key sheet. All depths and reduced levels in metres. Stratum thickness given in brackets in depth column.					Project CORUS TEESIDE Project No. B4009 Carried out for Enviro Consulting Limited		Borehole 8AB1 Sheet 1 of 1		

Scale 1:50

(c) MESG 298 v1.1507/06/2004 10:01:19



Borehole Log



Soil Mechanics

Drilled TQ Logged RW Checked JT		Start 27/04/2004 End 27/04/2004	Equipment, Methods and Remarks Dando 175		Depth from 0.00m to 9.10m Diameter 150mm Casing Depth 2.70m	Ground Level +10.23 mOD Coordinates E 55995.35 National Grid N 21611.15 Chainage		
Samples and Tests					Strata			
Depth	Type & No	Records	Date Casing	Time Water	Description	Depth, Level (Thickness)	Legend	Backfill/ Instruments
1.00-1.80	B 1				MADE GROUND: Limestone chippings. (Driller's description).	(1.00)		
					MADE GROUND: Very soft slightly gravelly CLAY. Gravel is angular to subangular fine to coarse fragments of slag. With occasional partings and lenses of silt.	1.00 +9.23 (1.40)		
2.40-2.80	B 2				Firm, locally stiff, red brown locally slightly sandy slightly gravelly CLAY. Gravel is angular to subangular fine and medium siltstone, sandstone, mudstone and coal.	2.40 +7.83 (0.40)		
2.80-3.10	B 3				Very soft brown CLAY. With many partings and laminations of silt.	2.80 +7.43 (2.20)		
5.20-5.80	B 4				Firm red brown locally slightly sandy slightly gravelly CLAY. Gravel is angular to subangular fine and medium siltstone, sandstone, mudstone and coal.	5.00 +5.23 (3.10)		
8.10-8.50	B 5				Stiff grey gravelly CLAY. Gravel is angular to subangular fine and medium mudstone.	8.10 +2.13 (1.00)		
			27/04/2004 2.70	dry		9.10 +1.13		
					EXPLORATORY HOLE ENDS AT 9.10 m			SP
Depth	Type & No	Records	Date Casing	Time Water	Groundwater Entries		Depth Related Remarks *	
					No.	Struck (m)	Post strike behaviour	Depth sealed (m)
					1	0.65	-	-
					Chiselling Depths (m)		Time	Tools used
Notes: For explanation of symbols and abbreviations see key sheet. All depths and reduced levels in metres. Stratum thickness given in brackets in depth column.					Project CORUS TEESSIDE Project No. B4009 Carried out for Enviros Consulting Limited		Borehole 8AB2 Sheet 1 of 1	
Scale 1:50 (c) MESG 298 v1.1507/06/2004 10:03:31								

Borehole Log



Soil Mechanics

Drilled TQ Logged RW Checked JT		Start 28/04/2004 End 28/04/2004		Equipment, Methods and Remarks Dando 175		Depth from 0.00m to 10.00m Diameter 150mm Casing Depth 3.00m		Ground Level Coordinates National Grid Chainage		+10.13 mOD E 56337.38 N 22221.27		
Samples and Tests						Strata						
Depth	Type & No	Records	Date Casing	Time Water	Description	Depth, Level (Thickness)	Legend	Backfill/ Instruments				
0.00-1.30	B 1				MADE GROUND: Brown, grey brown and white clayey, locally very clayey, sandy angular to subangular fine to coarse GRAVEL size fragments of slag. With some angular to subangular cobbles of slag.	(2.00)						
2.00-2.60	B 2				Firm grey brown slightly gravelly slightly organic CLAY. Gravel is subangular to subrounded fine and medium siltstone and mudstone.	2.00 +8.13 (1.20)						
3.20-3.60	B 3				Firm multicoloured slightly sandy slightly gravelly CLAY. Gravel is angular to subrounded fine and medium siltstone, sandstone, mudstone and coal.	3.20 +6.93 (5.00)						
8.20-8.70	B 4				Stiff grey gravelly CLAY. Gravel is angular to subangular fine to coarse mudstone.	8.20 +1.93 (1.80)						
			28/04/2004 3.00	dry								
Depth	Type & No	Records	Date Casing	Time Water	EXPLORATORY HOLE ENDS AT 10.00 m							
Groundwater Entries					Depth Related Remarks *				Chiselling			
No.	Struck (m)	Post strike behaviour	Depth sealed (m)		From	to (m)		Depths (m)	Time	Tools used		
1	1.30	-										
Notes: For explanation of symbols and abbreviations see key sheet. All depths and reduced levels in metres. Stratum thickness given in brackets in depth column.					Project CORUS TEESSIDE Project No. B4009 Carried out for Enviros Consulting Limited				Borehole GAB1 Sheet 1 of 1			
Scale 1:50					(c) MESG 298 v1.1507/06/2004 10:05:43				AGS			

Borehole Log



Soil Mechanics

Drilled GB Logged RW Checked JT		Start 27/04/2004 End 27/04/2004		Equipment, Methods and Remarks Dando 2000		Depth from 0.00m to 7.00m Diameter 150mm Casing Depth 6.80m		Ground Level +10.04 mOD Coordinates E 56558.72 National Grid N 23140.70 Chainage	
Samples and Tests					Strata				
Depth	Type & No	Records	Date Casing	Time Water	Description	Depth, Level (Thickness)	Legend	Backfill/ Instruments	
1.00-1.40	B 1				MADE GROUND: Very soft brown slightly sandy slightly gravelly CLAY. Gravel is angular to subangular fine to coarse fragments of slag, coal and plastic. With occasional angular to subangular cobbles of similar lithology. From 3.00-5.00m, soft, mottled grey. Below 5.00m, mottled grey and red brown with siltstone and mudstone gravel.				
3.10-3.90	B 2					(6.50)			
5.00-5.50	B 3								
6.50-7.00	B 4		27/04/2004 6.80	5.80	Moderately weak thinly laminated grey MUDSTONE. EXPLORATORY HOLE ENDS AT 7.00 m	6.50 +3.54 (0.50) 7.00 +3.04			SP
Depth	Type & No	Records	Date Casing	Time Water					
Groundwater Entries No. Struck Post strike behaviour 1 3.00 -					Depth sealed (m) -		Depth Related Remarks * From to (m)		
							Chiselling Depths (m) Time Tools used		
Notes: For explanation of symbols and abbreviations see key sheet. All depths and reduced levels in metres. Stratum thickness given in brackets in depth column.					Project CORUS TEESSIDE Project No. B4009 Carried out for Enviros Consulting Limited		Borehole GAB2 Sheet 1 of 1		

Scale 1:50

(c) MESG 298 v1.1507/06/2004 10:07:41

